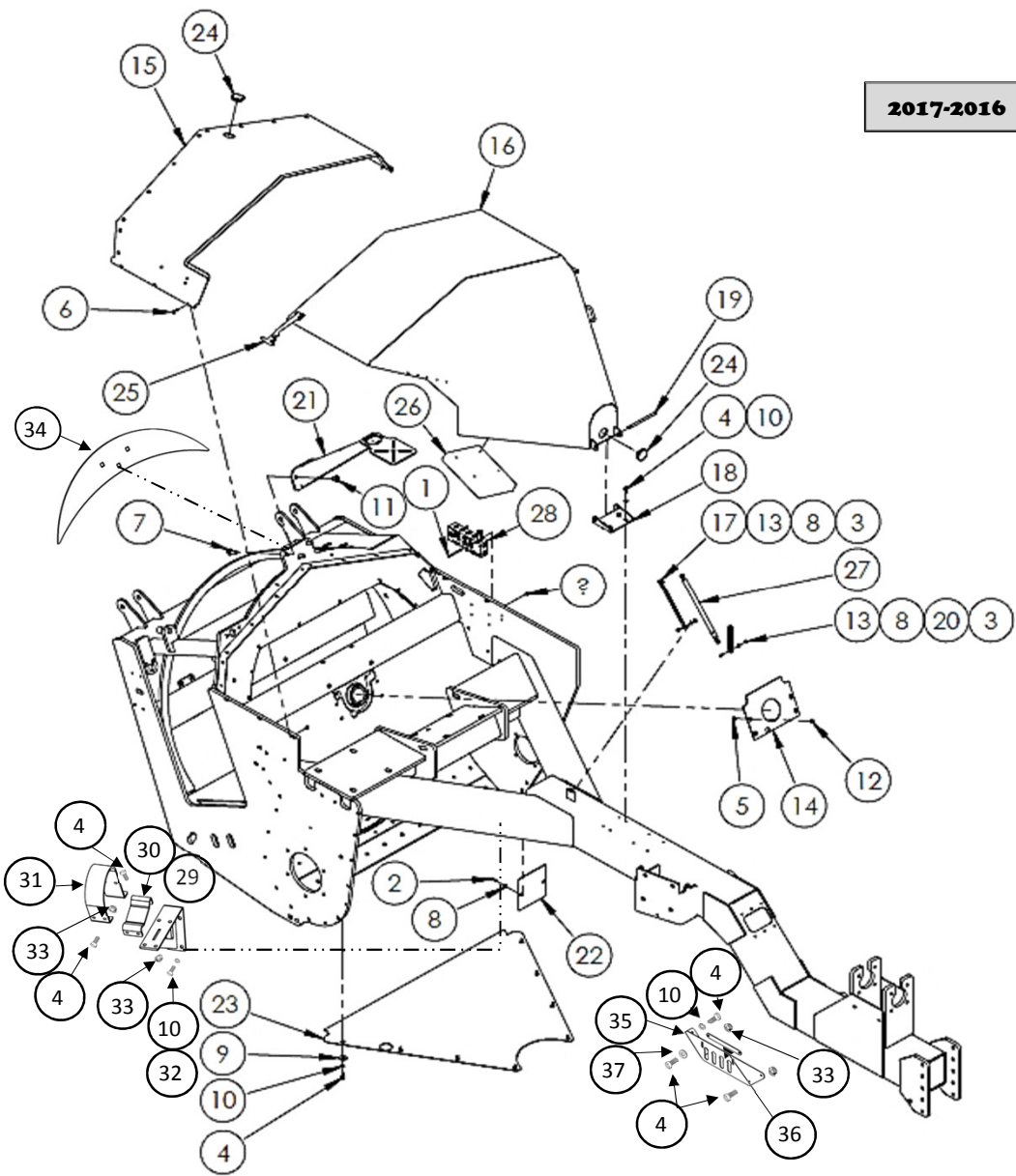


**2017-2016**



ITEM	PART NUMBER	DESCRIPTION	QTY.
1	111-504-052	1/4 X 3 1/4 UNC HEX HEAD BOLT G5	4
2	111-804-012	1/4 X 3/4 UNC HEX HEAD BOLT G8	2
3	111-804-016	1/4X 1 UNC HEX HEAD BOLT G8	2
4	111-806-016	3/8 X 1 UNC HEX HEAD BOLT G8	26
5	121-504-012	1/4 X 3/4 UNC CARRIAGE BOLT	16
6	121-504-020	1/4 X 1 1/4 UNC CARRIAGE BOLT	5
7	121-510-032	5/8 X 2 UNC CARRIAGE BOLT	3
8	210-000-004	1/4 USS FLAT WASHER	4
9	220-006-024	3/8 X 1-1/2 FENDER WASHER	8
10	230-000-006	3/8 LOCK WASHER	18
11	321-010-000	5/8 UNC LOCK NUT	3
12	331-504-000	1/4 UNC SERRATED NUT	4
13	361-004-000	1/4 UNC FLANGE LOCK NUT	23
14	15006-13rev2	Fan Shaft Cover Plate	1
15	18000-13	Rear Hood Assembly	1
16	19000-13	Hood Assembly	1
17	19008-13	Hood Safety Stop	1
18	19009-13	Hood Mount Hinge	1
19	19010-13	Hood Hinge Pin	1
20	19011-13	Hood Safety Chain	1
21	23600-15	Guidance Tower	1
22	52017-13	Rear Hitch Tube Cover	1
23	52020-14rev1	Front Belly Pan	1
24	90805-13	Guidance Wiring Plug	2
25	90820-13	Hood Draw Latch	2
26	90823-15	Service Manual Holder	1
27	90817-13	Hood Shock GAS2988EG	1
28	90252-14rev1 *	New Hyd Manifold with Counterbalance Valve	1
	* 90255-16	Hydraulic Manifold Assembly with Fittings	
29	C-0106	Tertiary Shaft Safety Support Base	1
30	C-0110	Tertiary Shaft Safety Bottom Cover	1
31	C-0103	Tertiary Shaft Safety Cover	1
32	111-806-020	3/8 X 1-1/4 UNC HEX HEAD BOLT G8	4
33	361-006-000	3/8 UNC FLANGE LOCK NUT	12
34	C-0096	Long Chute Front Deflector	1
35	C-0099	Hydraulic Hose Holder	1
36	C-0100	Hydraulic Hose Retainer Bar	1
37	210-000-006	3/8 USS FLAT WASHER	2